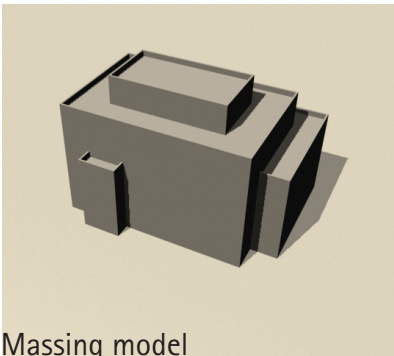


Boston Redevelopment Authority Digital 3D Model Submission Guidelines

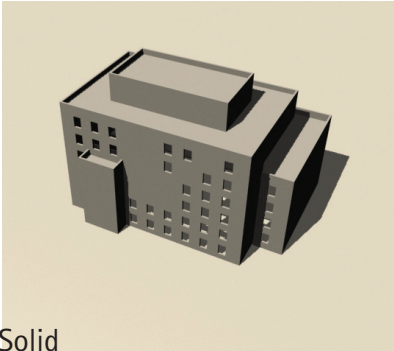
Revised: 07.2010



1. Massing model

For Schematic Design (RFP, PNF,DPIR):

Submit massing model (Figure 1.) only.



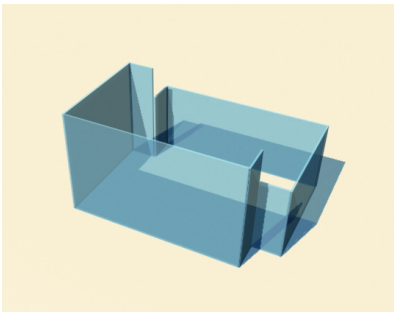
2a. Solid

For Final Approval (FPIR):

Submit **both** massing model and detailed model.

Detailed model (Figure 2d.) should be separated into layers or groups according to:

- a. Solid (Figure 2a.): Any non-transparent elements, such as exterior walls, window mullions ...
- b. Transparent (Figure 2b.): Any transparent elements, such as window glass ...
- c. Add-on (Figure 2c.): Any minor details ...



2b. Transparent

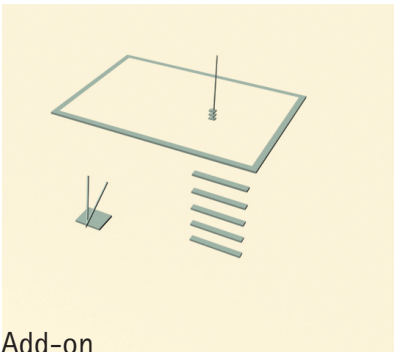
Scale and coordinate system:

Building footprints and streets of the entire city of Boston can be downloaded at:

http://www.bostonredevelopmentauthority.gov/BRA_3D_Models/2D-download.html

Partial digital 3D model of the city is available for download at:

http://www.bostonredevelopmentauthority.gov/BRA_3D_Models/3D-download.html



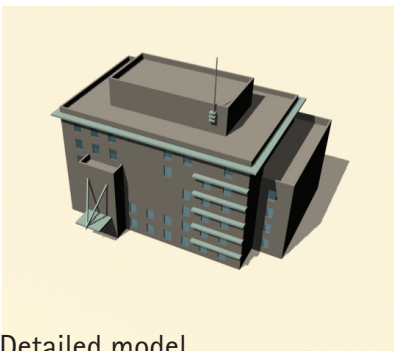
2c. Add-on

The coordinate system of BRA's context model is *Massachusetts State Plane Feet*. The digital model should be scaled and oriented to fit this coordinate system based on the 2D info downloaded from aforementioned web site.

File Formats:

All digital 3D models submitted should be on a CD-ROM in **any one** of the following formats:

.rvt .skp .MAX .3DS .DXF **or** .DWG



2d. Detailed model

Contact:

Te-Ming Chang, AIA

Manager, Urban Design Technology Group

Boston Redevelopment Authority

One City Hall Square, 9th FL

Boston, MA 02201-1007

Te-Ming.Chang.BRA@cityofboston.gov

Tel: 617-918-4217

Fax: 617-918-4329