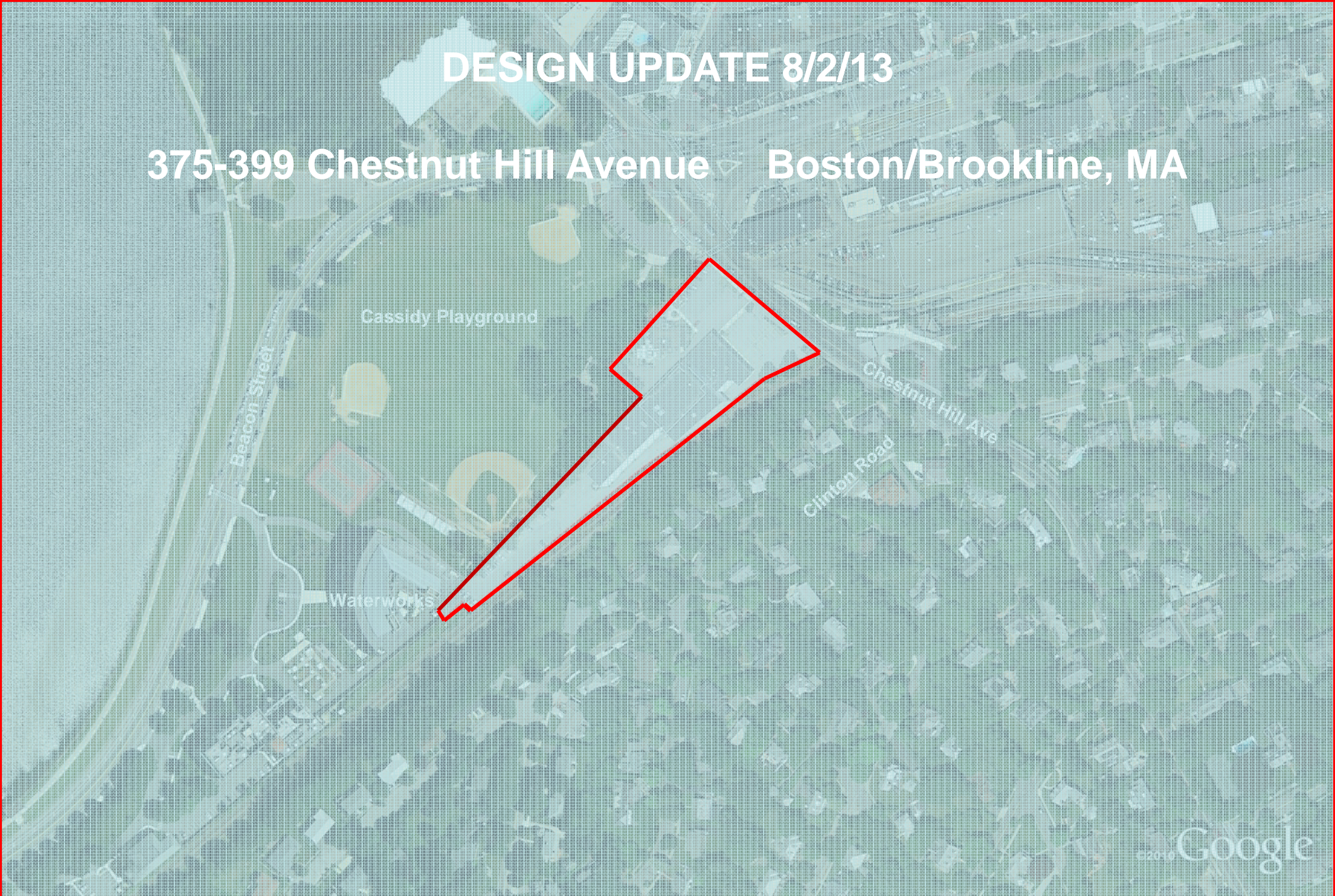


DESIGN UPDATE 8/2/13

375-399 Chestnut Hill Avenue Boston/Brookline, MA





375-399 Chestnut Hill Avenue Boston/Brookline, MA

ADD Inc



**HALVORSON DESIGN
PARTNERSHIP**

Howard/Stein-Hudson Associates, Inc
38 Chauncy St., 9th Floor
Boston, MA 02111
617.482.7080

Existing Site Boundary

	Site Area 92,853 SF		Brookline Site Area 18,176 SF		Project Site Area 111,029 SF			
Use	Building Area Boston	Parking Spaces	Building Area Brookline	Parking Spaces	Total Area	Total Parking	Parking Ratio (per zoning)	# reqd
Hotel - 180 Rooms	67,300		36,900		104,200	90	.5/room	90
Residential - 92 Units	109,800		-		109,800	92	1/Unit	92
Retail / Public Garage	6,600		7,800		14,400	15	1/1000	15
Total SF	183,700		44,700		228,400	197		197
FAR	1.98		2.46		2.06			
Parking Spaces						197		

* SF #'s above do not include any basement spaces which serve the project

Basement Area

(area not included in FAR) 45,800 16,400 62,200

(parking, bikes, mech, laundry, storage)

Proposed Parking Total

At Grade	100	(90 Hotel + 10 Short Term Retail Parking Spaces)
In Garage	97	(92 Residential + 5 Public Parking Spaces + Valet Spaces)
Total	197	

Residential Unit Summary Mix

Type	Total # Units	% mix	
1 BR	44.0	48%	48%
1Br + Den		0%	1 Bedroom
2 Br/ 2 Ba	48.0	52%	52%
2 Br/ 2 Ba + Den		0%	2 Bedroom

375-399 Chestnut Hill Avenue Boston/Brookline, MA

Table 1 Project Vehicle Trip Comparison: DPIR Program vs. Revised Program without Office

Uses	DPIR Program ¹⁾ <i>March 13, 2013</i>	Revised Program Without Office ¹⁾ <i>July 24, 2013</i>	Comparison DPIR Program vs. Revised Program
Hotel	196 rooms	180 rooms	
Residential	74 units	92 units	
Medical Office	18,000 sf	0 sf	
Retail/Restaurant	14,200 sf	14,400 sf	
Daily Vehicle Trips			
In	1,101	910	-17.3%
<u>Out</u>	<u>1,101</u>	<u>910</u>	-17.3%
Total	2,202	1,820	-17.3%
a.m. Peak Hour Vehicle Trips			
In	64	39	-39.0%
<u>Out</u>	<u>46</u>	<u>41</u>	-10.9%
Total	110	80	-27.7%
p.m. Peak Hour Vehicle Trips			
In	84	74	-11.9%
<u>Out</u>	<u>89</u>	<u>58</u>	-34.8%
Total	173	132	-23.7%

1) Program as presented by Boston Development Group (BDG) in the Draft Project Impact Report submitted to City of Boston, March 13, 2013.

2) Revised program dated July 24, 2013.



375-399 Chestnut Hill Avenue Boston/Brookline, MA

ADD Inc

**BOSTON
DEVELOPMENT
GROUP**

**HALVORSON DESIGN
PARTNERSHIP**

Howard/Stein-Hudson Associates, Inc
38 Chauncy St., 9th Floor
Boston, MA 02111
617.482.7080

Proposed Site Plan



375-399 Chestnut Hill Avenue Boston/Brookline, MA

ADD Inc



**HALVORSON DESIGN
PARTNERSHIP**

Howard/Stein-Hudson Associates, Inc
38 Chauncy St., 9th Floor
Boston, MA 02111
617.482.7080

Waterworks Drive



Cassidy Playground

Waterworks

Chestnut Hill Avenue

375-399 Chestnut Hill Avenue Boston/Brookline, MA

ADD Inc

BOSTON DEVELOPMENT GROUP

HALVORSON DESIGN PARTNERSHIP

Howard/Stein-Hudson Associates, Inc
38 Chauncy St., 9th Floor
Boston, MA 02111
617.482.7080

Enlarged Site Plan



375-399 Chestnut Hill Avenue Boston/Brookline, MA

ADD Inc

**BOSTON
DEVELOPMENT
GROUP**

**HALVORSON DESIGN
PARTNERSHIP**

Howard/Stein-Hudson Associates, Inc
38 Chauncy St., 9th Floor
Boston, MA 02111
617.482.7080

Enlarged Site Plan



375-399 Chestnut Hill Avenue Boston/Brookline, MA

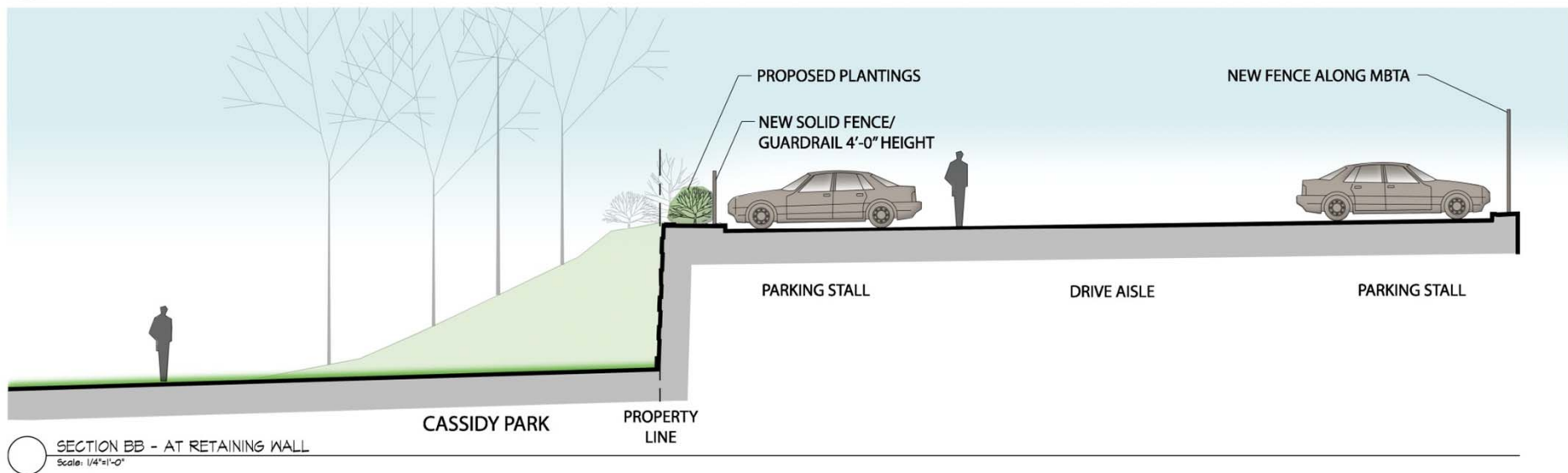
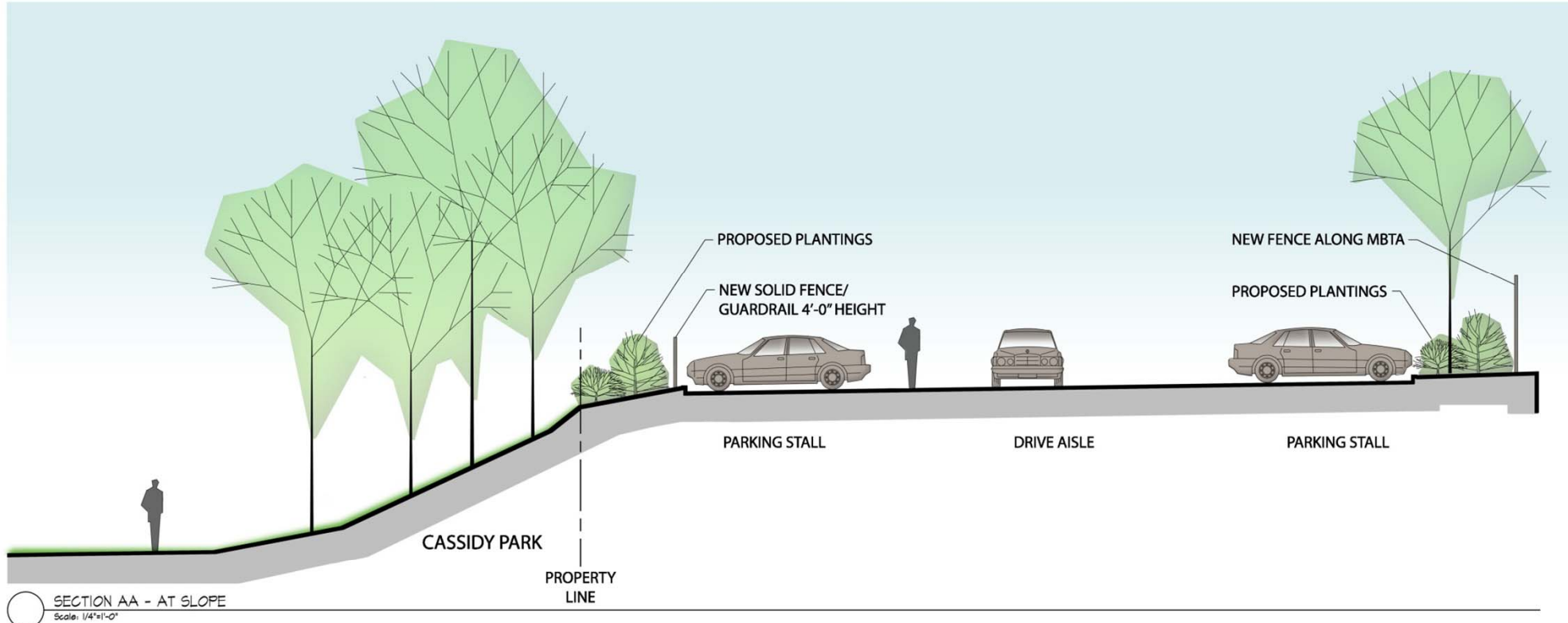
ADD Inc

**BOSTON
DEVELOPMENT
GROUP**

**HALVORSON DESIGN
PARTNERSHIP**

Howard/Stein-Hudson Associates, Inc
38 Chauncy St., 9th Floor
Boston, MA 02111
617.482.7080

Park Landscape Plan



375-399 Chestnut Hill Avenue Boston/Brookline, MA

ADD Inc

**BOSTON
DEVELOPMENT
GROUP**

**HALVORSON DESIGN
PARTNERSHIP**

Howard/Stein-Hudson Associates, Inc
38 Chauncy St., 9th Floor
Boston, MA 02111
617.482.7080

Landscape Section





/// Valet Parking

Hotel

Residential

Retail / Restaurant

375-399 Chestnut Hill Avenue Boston/Brookline, MA

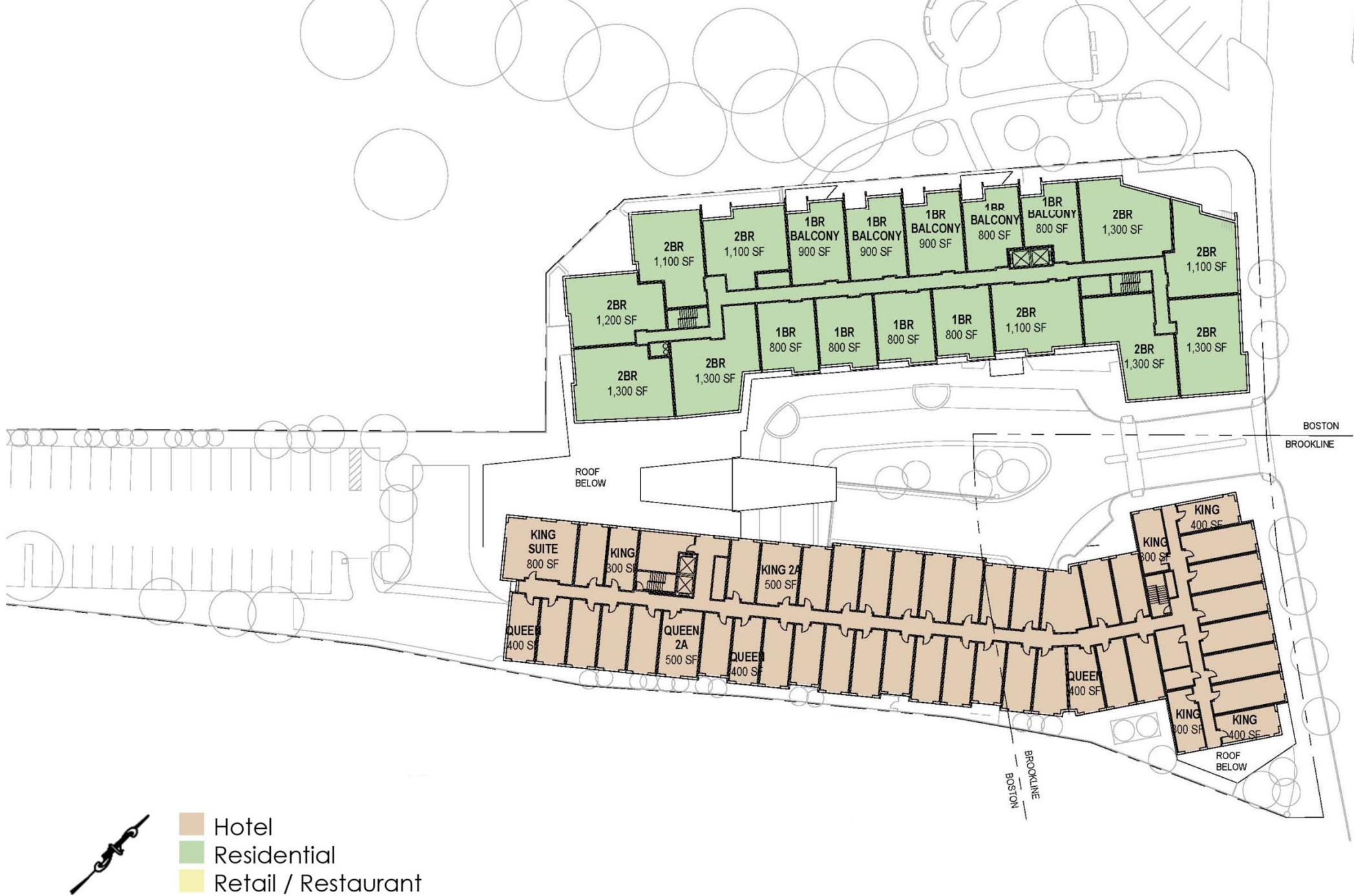
ADD Inc

BOSTON DEVELOPMENT GROUP

HALVORSON DESIGN PARTNERSHIP

Howard/Stein-Hudson Associates, Inc
38 Chauncy St., 9th Floor
Boston, MA 02111
617.482.7080

Garage Floor Plan



375-399 Chestnut Hill Avenue Boston/Brookline, MA

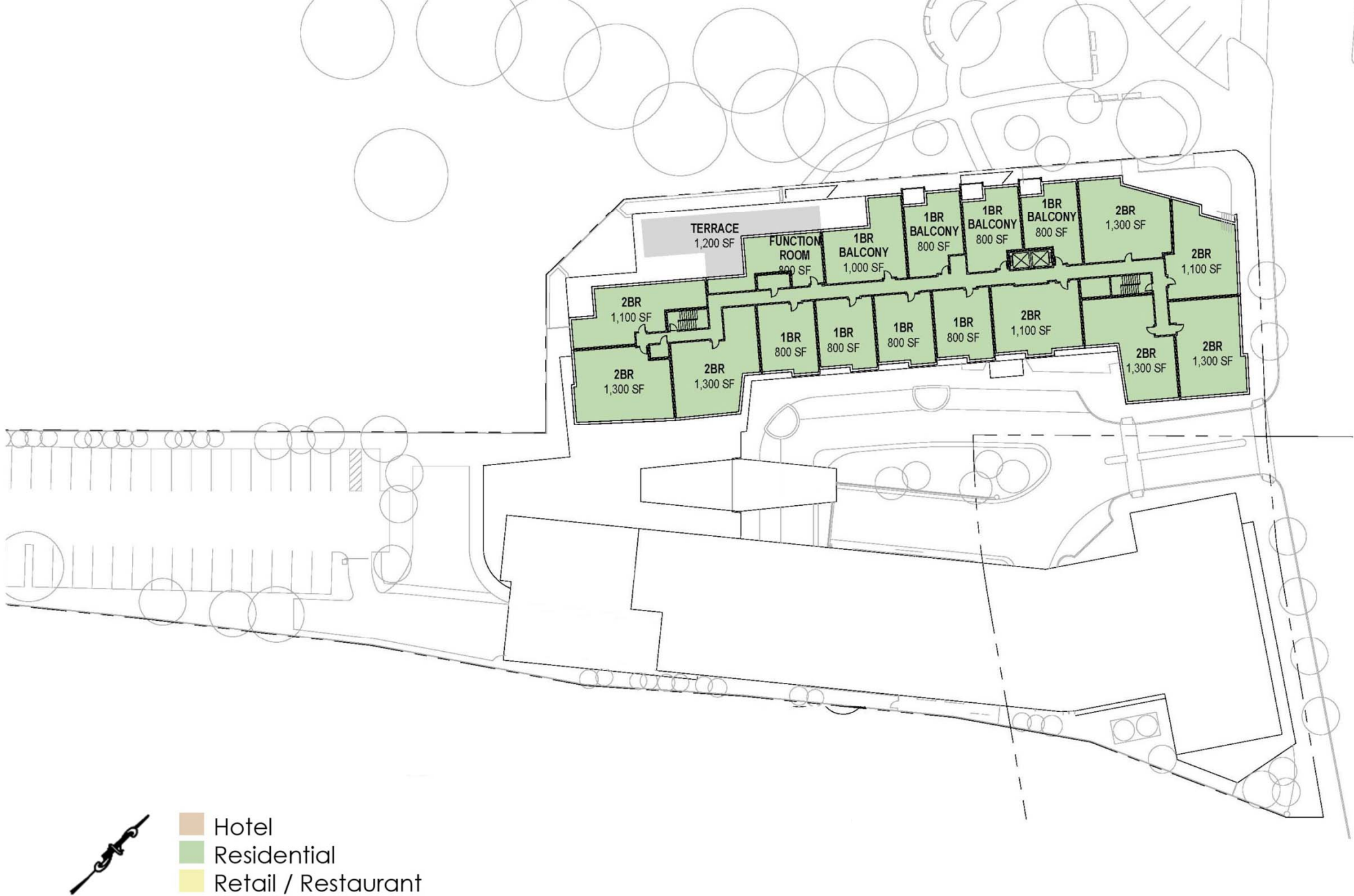
ADD Inc

BOSTON DEVELOPMENT GROUP

HALVORSON DESIGN PARTNERSHIP

Howard/Stein-Hudson Associates, Inc.
38 Chauncy St., 9th Floor
Boston, MA 02111
617.482.7080

Typical Floor Plan



375-399 Chestnut Hill Avenue Boston/Brookline, MA

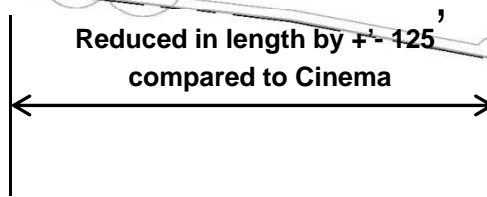

ADD Inc

BOSTON DEVELOPMENT GROUP

HALVORSON DESIGN PARTNERSHIP

Howard/Stein-Hudson Associates, Inc.
38 Chauncy St., 9th Floor
Boston, MA 02111
617.482.7080

6th Floor Plan (Residential)



ADD Inc





375-399 Chestnut Hill Avenue Boston/Brookline, MA

ADD Inc



**HALVORSON DESIGN
PARTNERSHIP**

Howard/Stein-Hudson Associates, Inc
38 Chauncy St., 9th Floor
Boston, MA 02111
617.482.7080

Aerial of Proposed Development

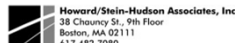


375-399 Chestnut Hill Avenue Boston/Brookline, MA

ADD Inc



HALVORSON DESIGN
PARTNERSHIP



Aerial View Looking West



375-399 Chestnut Hill Avenue Boston/Brookline, MA

ADD Inc



HALVORSON DESIGN
PARTNERSHIP



View From Cassidy Park



375-399 Chestnut Hill Avenue Boston/Brookline, MA

ADD Inc



HALVORSON DESIGN
PARTNERSHIP



Elevation View From Park



375-399 Chestnut Hill Avenue Boston/Brookline, MA

ADD Inc



**HALVORSON DESIGN
PARTNERSHIP**



Howard/Stein-Hudson Associates, Inc.
38 Chauncy St., 9th Floor
Boston, MA 02111
617.482.7080

View at Courtyard

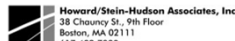


375-399 Chestnut Hill Avenue Boston/Brookline, MA

ADD Inc



**HALVORSON DESIGN
PARTNERSHIP**



View at Courtyard

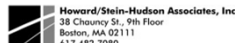


375-399 Chestnut Hill Avenue Boston/Brookline, MA

ADD Inc



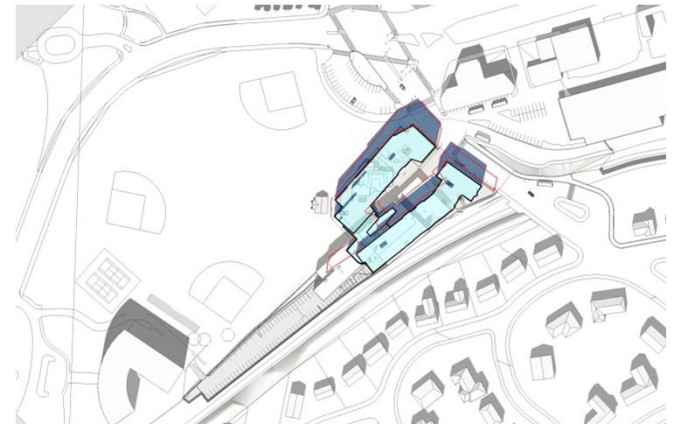
HALVORSON DESIGN
PARTNERSHIP



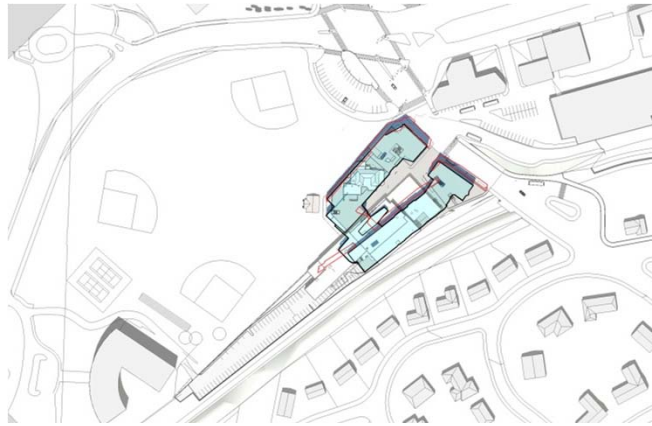
View From Cassidy Park



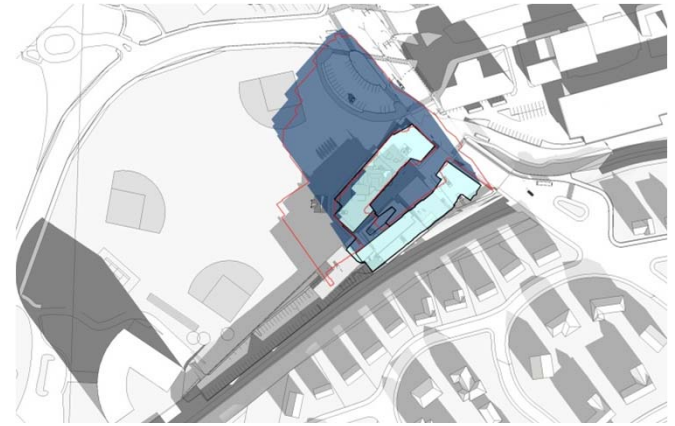
June 21, 9am



September 21, 12pm




June 21, 12pm




December 21, 9am

Shadow Key

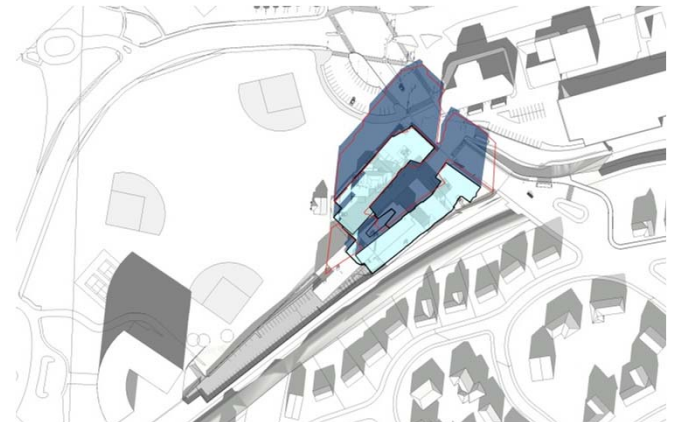
 Extent Of Proposed New Shadow (Blue)

 Extent Of Shadow In DPIR Scheme (Red)

 Extent Of Existing Cinema Shadow (Grey)



September 21, 9am



December 21, 12pm

375-399 Chestnut Hill Avenue

Boston/Brookline, MA