

# Northern Avenue Bridge and Community Galleries

Boston, Massachusetts



Schwartz/Silver Architects, Inc.  
Fay, Spofford & Thorndike, Inc.

# Northern Avenue Bridge and Community Galleries

Boston, Massachusetts



Schwartz/Silver Architects, Inc.  
Fay, Spofford & Thorndike, Inc.

# Northern Avenue Bridge and Community Galleries

Boston, Massachusetts



Schwartz/Silver Architects, Inc.  
Fay, Spofford & Thorndike, Inc.

# Northern Avenue Bridge and Community Galleries

Boston, Massachusetts



Schwartz/Silver Architects, Inc.  
Fay, Spofford & Thorndike, Inc.

# Northern Avenue Bridge and Community Galleries

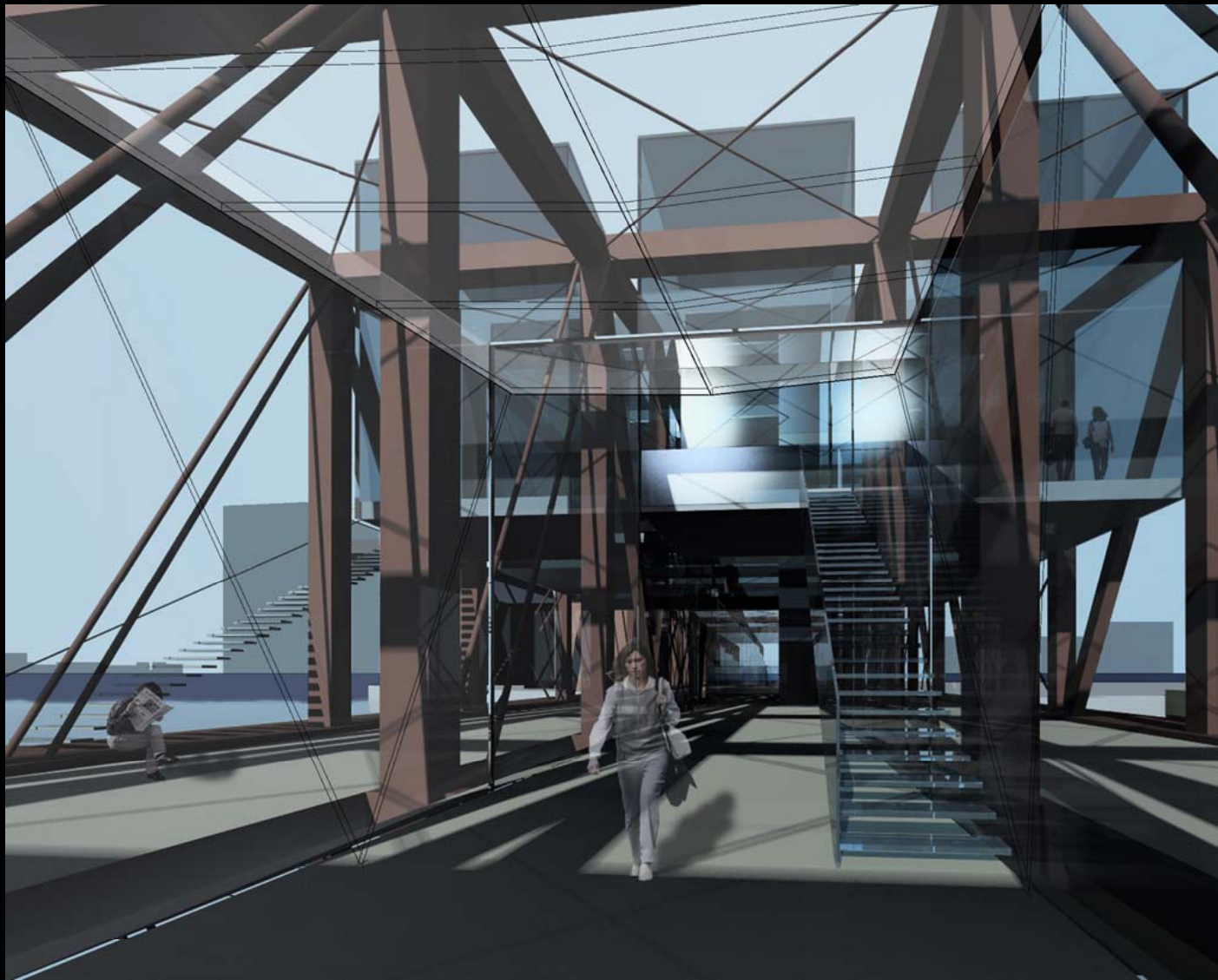
Boston, Massachusetts



Schwartz/Silver Architects, Inc.  
Fay, Spofford & Thorndike, Inc.

# Northern Avenue Bridge and Community Galleries

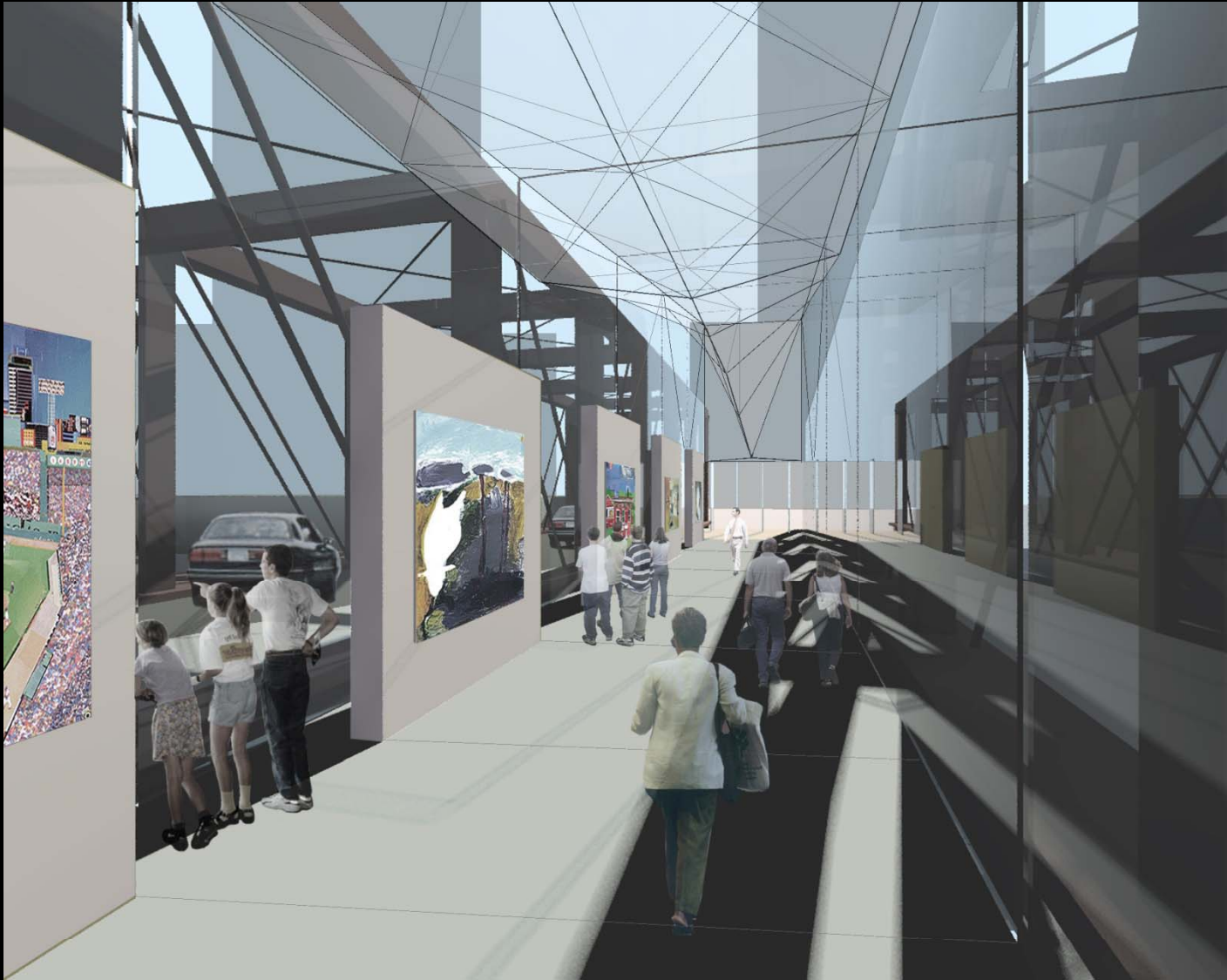
Boston, Massachusetts



Schwartz/Silver Architects, Inc.  
Fay, Spofford & Thorndike, Inc.

# Northern Avenue Bridge and Community Galleries

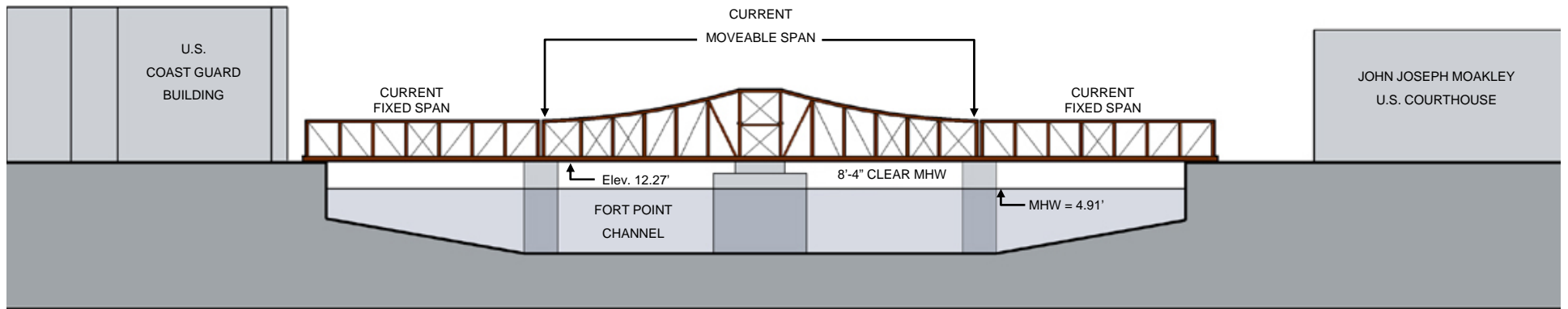
Boston, Massachusetts



Schwartz/Silver Architects, Inc.  
Fay, Spofford & Thorndike, Inc.

# Northern Avenue Bridge and Community Galleries

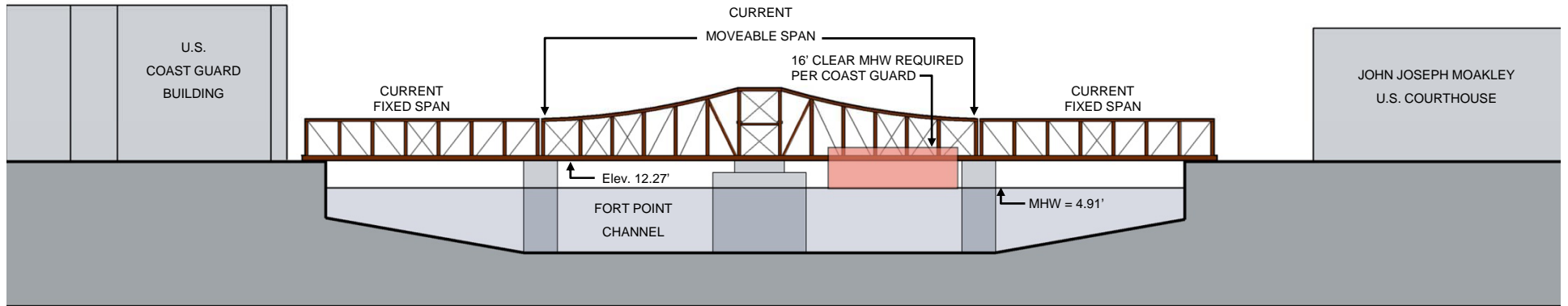
Boston, Massachusetts



## EXISTING BRIDGE ELEVATION

# Northern Avenue Bridge and Community Galleries

Boston, Massachusetts



## EXISTING CHANNEL CLEARANCE

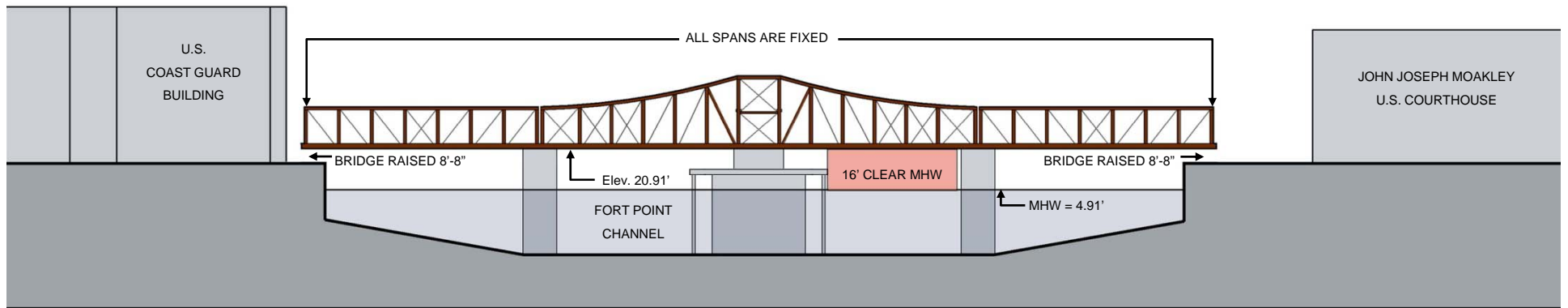
\* NEW CLEARANCE 16' AT MEAN HIGH WATER MARK PER COAST GUARD

SAME AS EVELYN MOAKLEY BRIDGE

Schwartz/Silver Architects, Inc.  
Fay, Spofford & Thorndike, Inc.

# Northern Avenue Bridge and Community Galleries

Boston, Massachusetts



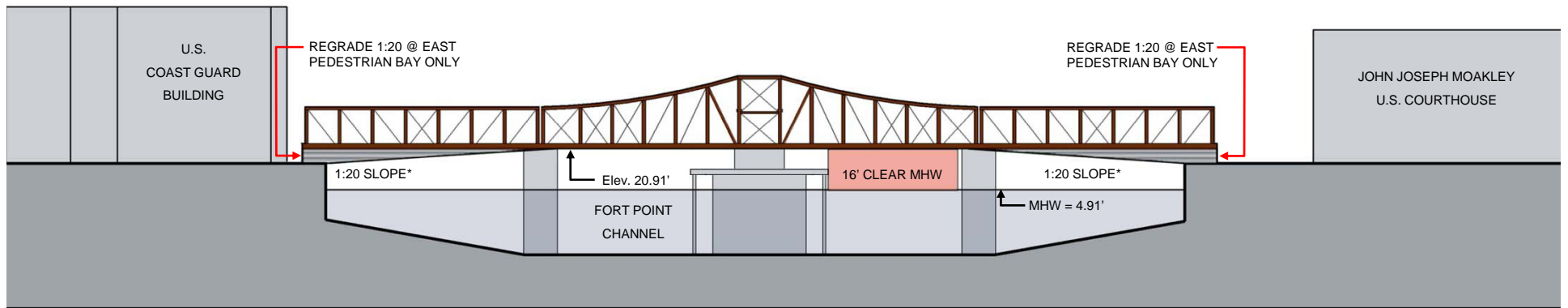
**RAISE ENTIRE BRIDGE STRUCTURE**

\* NEW CLEARANCE 16' AT MEAN HIGH WATER MARK PER COAST GUARD  
SAME AS EVELYN MOAKLEY BRIDGE

Schwartz/Silver Architects, Inc.  
Fay, Spofford & Thorndike, Inc.

# Northern Avenue Bridge and Community Galleries

Boston, Massachusetts



## BRIDGE ELEVATION - EXISTING

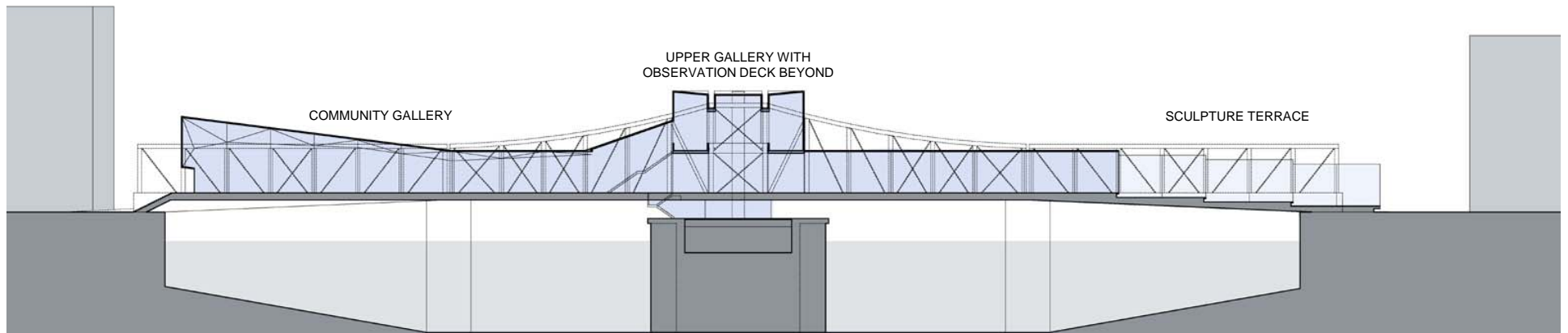
\* NEW CLEARANCE 16' AT MEAN HIGH WATER MARK PER COAST GUARD  
SAME AS EVELYN MOAKLEY BRIDGE

- \* Center span raised 8'-8" with Pedestrian Access approach spans sloping at 1:20 incline to allow ADA access as a sloping-walk. The length of the fixed spans allows this slope with modest re-grading at each end of the bridge.
- \* Distance past bridge ends required to be regraded 25' to 35' depending on survey information.
- \* Vehicular Access bay does not require regrading, as the slope is 1:15 and occurs within the bridge structure.

Schwartz/Silver Architects, Inc.  
Fay, Spofford & Thorndike, Inc.

# Northern Avenue Bridge and Community Galleries

Boston, Massachusetts

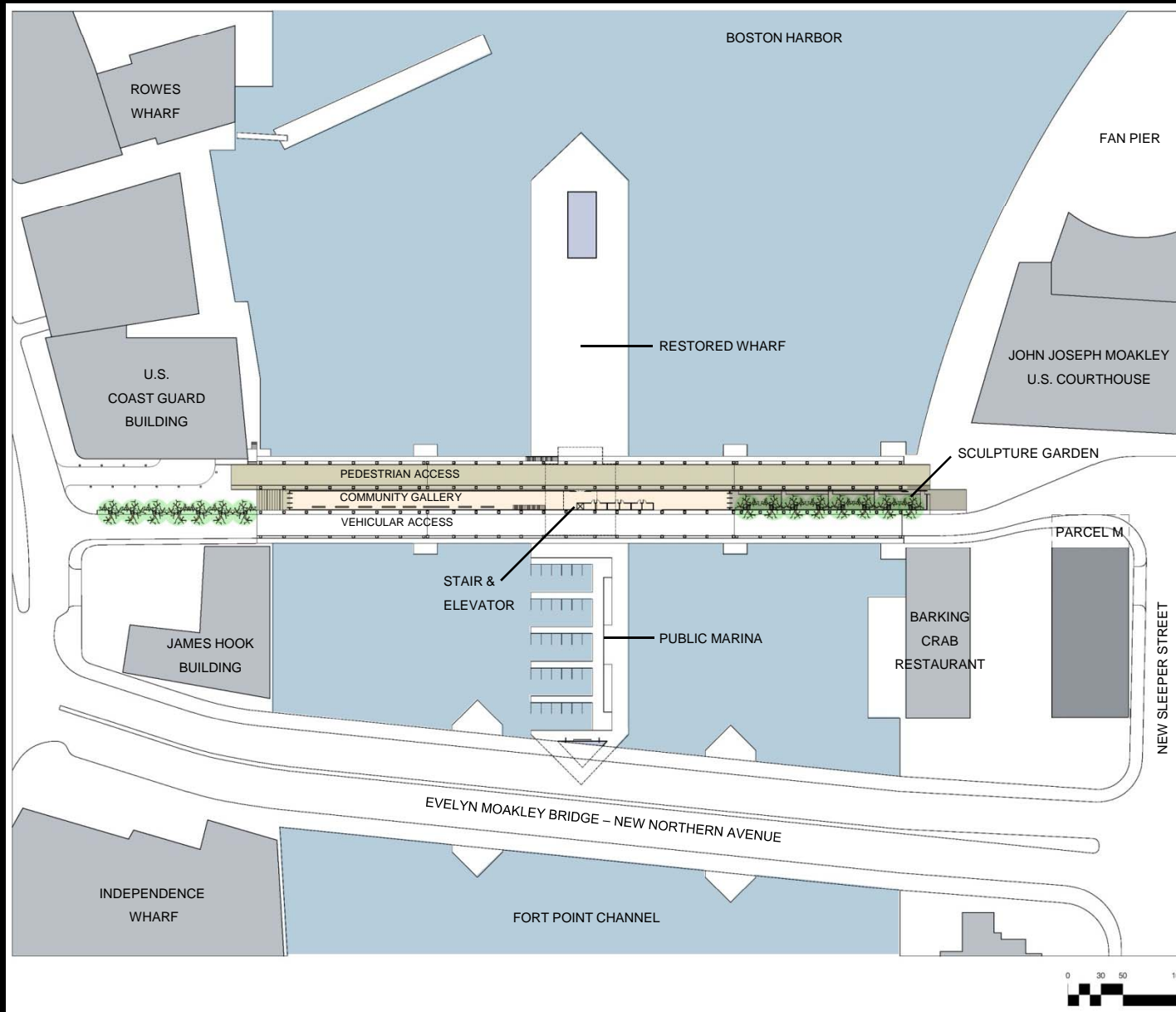


Schwartz/Silver Architects, Inc.  
Fay, Spofford & Thorndike, Inc.

# Northern Avenue Bridge and Community Galleries

Boston, Massachusetts

## BRIDGE PLAN



Schwartz/Silver Architects, Inc.  
Fay, Spofford & Thorndike, Inc.

# Northern Avenue Bridge and Community Galleries

Boston, Massachusetts



Schwartz/Silver Architects, Inc.  
Fay, Spofford & Thorndike, Inc.

## Northern Avenue Bridge and Community Galleries

Boston, Massachusetts

- Adaptive-ReUse of 1909 Steel Truss Bridge
- Completes Boston's Harborwalk across Fort Point Channel, connecting to South Boston waterfront
- New public amenities for Boston: 20,000 gsf exhibit space, possible retail space, sculpture terrace
- Rebuilt wharf with public marina and public exhibit of Northern Avenue Bridge history and artifacts
- Connects Rose Kennedy Greenway to Fan Pier & ICA

